



HV Forming System Forming Equipment

Shores, Dropheads and Beams



Ischebeck Shore



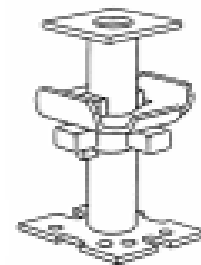
Acrow Shore



DOKA Shore



XL Shore



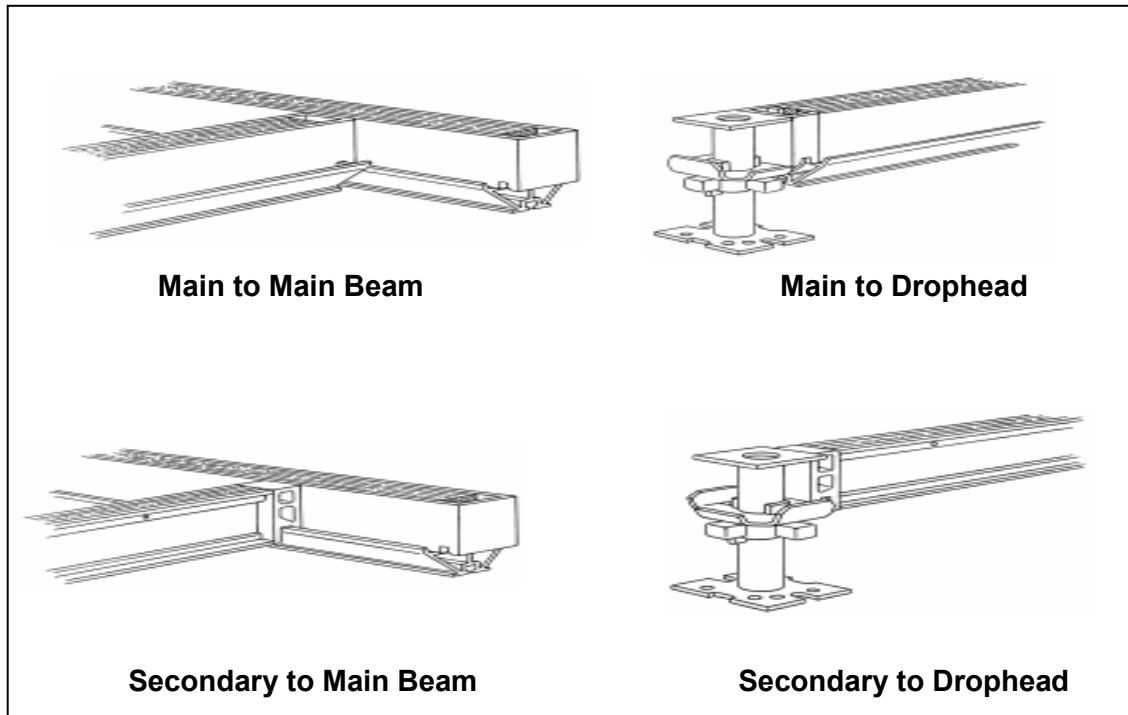
Item	Height (feet)	Weight (lbs.)
Drophead	10"	10.5

Item	Length (feet)	Center to Center (feet)	Weight (lbs.)	Pieces Per Barella
3'- 9" Main Beam	3'- 9"	4'- 1"	20.7	39
5'- 7" Main Beam	5'- 7"	5'-11"	30.4	28
11'- 6" Main Beam	11'- 6"	11'-10"	63.5	28



Item	Length (feet)	Center to Center (feet)	Weight (lbs.)	Pieces Per Barella
3'- 9" Secondary Beam	3'- 9"	4'-1"	7.7	88
5'- 7" Secondary Beam	5'- 7"	5'-11"	13.7	65

HV System Connections



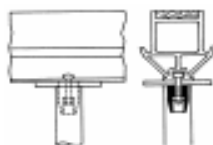
HV System Accessories



Guardrail Post



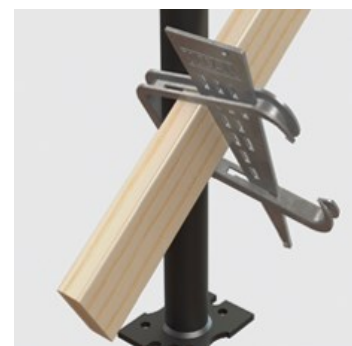
HV Hanger (2500 lb.cap)



Positioners
(For supplemental shores)



Barella / Casters



HV Wedge Clamp

HV System Accessories



HV Drophead Clamp



Tripod



Titan Column Lock



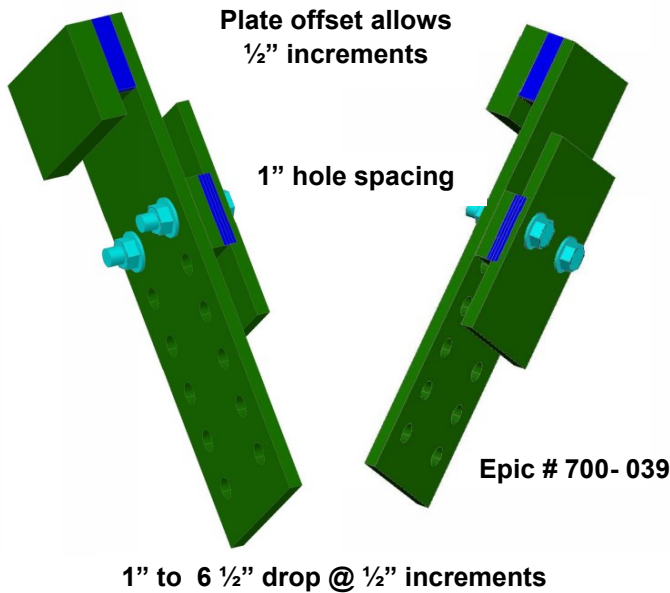
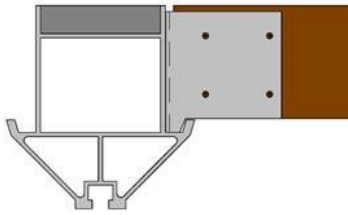
HV Drophead Bracket
(For beams 14" below soffit)



Safety Catch

HV Drop Deck Brackets

4x4's may be used in place of HV Secondary Beams for limited areas where lengths other than 3'-9" or 5'-7" are needed. Consult your Engineering Department for allowable length and spacing. They must have an End Clip for 4x4 (700-013) nailed to each end with (8) 16d nails.

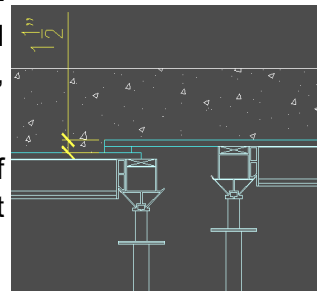


HV Drop Deck Brackets

HV Drop Deck Brackets should be considered whenever there is an elevation change of 1 inch to 6-1/2 inches.

Some advantages to using these brackets include the following:

- Allows for continuous flow of the aluminum members, thus eliminating the need to stop and start the forming system, as shown here.
- Reduces the number of shores needed to support the system.



The safe working load of brackets is 3,700 lbs.

Shoring requirements are as follows:

- Slabs up to 12 inches require **NO** additional shores.
- Slabs over 12 inches require shoring
- HV drop deck brackets (Epic 700-039) are available from the equipment group. Please allow sufficient lead time to manufacture the brackets.



HV Shear Wall Bracket

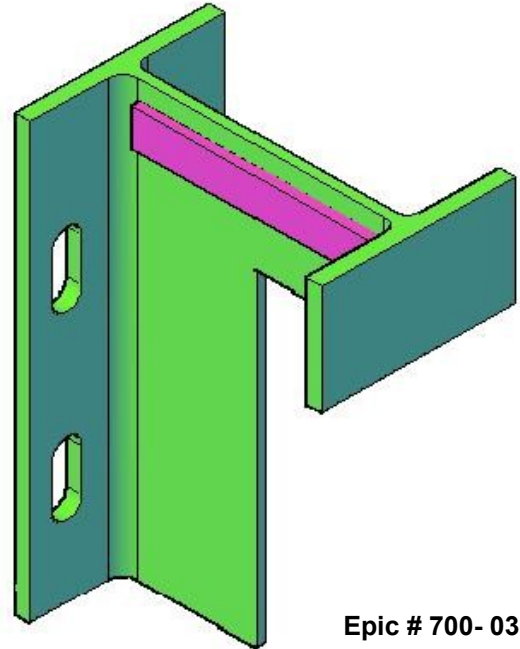
The shear wall bracket is intended for framing over and through openings, e.g., shafts, etc., adjacent to walls.

There is no mechanism for relieving loads to strip so they should **NOT** be used for supporting concrete.

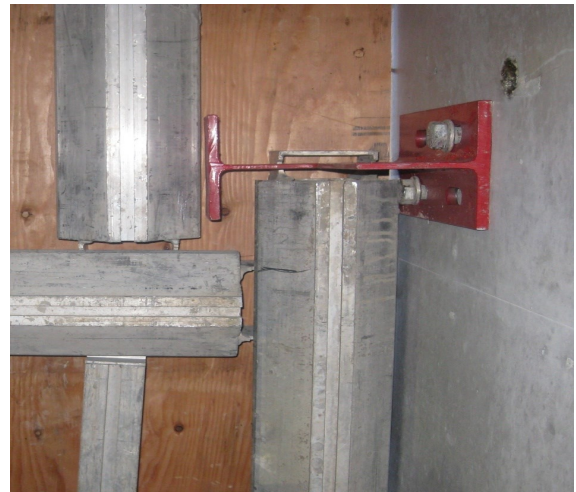
Decks where shear wall brackets are used should be stripped from the top of the deck.

The green brackets include a 1/4"x6" lug which increases capacity to 4,700 lbs. They are available from the Equipment Group but allow sufficient time for manufacture and delivery.

The HV Shear Wall Bracket (Epic 700-038) weighs 13.5 lbs. and uses (2) 3/4" x 4 -1/2" Tang or LDT Bolts. Follow fastener manufacturer's recommended safe working loads.



Epic # 700- 038



Basic DOKA System Components



DOKA Positioners
with flat & lock washer
700-601



DOKA Bracing Clamp



**Special
Humble Head**
700-600



**DOKA Re-shore
Clip**



HV - Out of Service Criteria

1. Inspect HV Main and Secondary Beams and HV dropheads. Inspect all welds and end clips prior to installation. Damaged equipment should be **MARKED**. Equipment found with cracked or suspect welds, damaged clips or saw cuts **MUST** be returned to the Equipment Center.
2. **DO NOT** attempt to straighten bent end clips; **REMOVE** the beam from service.
3. **DO NOT** use HV if more than 25% of the nailer is missing.



Note: This photo shows a large weld crack. Usually the cracks are smaller, often only 1/8" long.

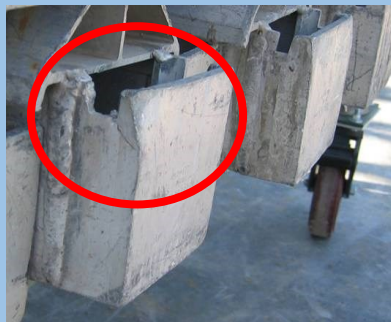
A small crack will grow if the main beam is not removed from service and could eventually fail.

REMOVE cracked HV main beams from service.

Note: This photo shows a crack in the clip running at a 45 degree angle from the notch. Often the crack is just a hairline.

A vertical crack on the other side of the clip is sometimes observed on main beams that have been dropped.

Cracks have been observed in clips that are not bent.



Note: This main beam was obviously abused. Hammer marks are apparent on both sides of the beam, and probably cracked the welds, which could cause the beam to fail.

REMOVE from service main beams and secondary beams with excessive hammer marks and dents.



Note: This photo shows a defective HV drop head where the cast nut has cracked when it was struck by a hammer.

REMOVE HV drop heads with cracked or missing parts from service.



Note: Damaged equipment must be removed and **MARKED** to show that it is damaged and that it cannot be used.



Use a paint stick and mark **ONE** end of the damaged beams. This is the best method to alert yard personnel that the marked equipment is in need of repair. Also, keep damaged equipment separate and **DO NOT** mix it with undamaged equipment.

